

# APARTMENT

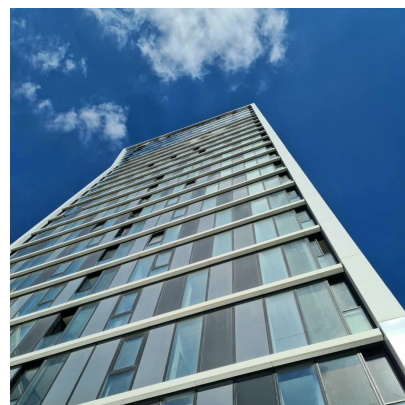
## LUXEMBOURG-KIRCHBERG

REF. 4855

# SOLD

2 bedroom(s)

80m<sup>2</sup> Area



FOR SALE - 2 bedroom flat in Luxembourg Kirchberg - INFINITY LIVING

Situated in the first residential tower in the Grand Duchy of Luxembourg at the entrance to Kirchberg, close to the city centre and offering breathtaking views.

This 25-storey architectural gem with pure and elegant lines is designed by world-renowned architect Bernardo Fort-Brescia of the Arquitectonica agency in collaboration with M3 Architects.

In the heart of the business district and a stone's throw from the Philharmonic, the Mudam and the Grand Theatre, this tower is set in an ideal urban setting. The project combines the three entities: LIVING, SHOPPING and WORKING, without forgetting the presence of the Tram to facilitate your journeys to the city centre.

This 2 bedroom flat of 80m<sup>2</sup> offers you top-of-the-range services:

- Fully equipped open kitchen
- terrace-loggia convertible into a winter garden of 7 m<sup>2</sup>
- exceptional ceiling height 2.90 m
- large triple-glazed bay windows, aluminium frame
- walk-in shower and top-of-the-range sanitary equipment
- a private parking space
- cellar

Not forgetting the prestigious private concierge service.

For any information, please contact our agency under +352 26 54 17 17.

<https://www.loft.lu/en/detail-5418-vente-appartement-luxembourg-kirchberg>

**loft**.lu

18, rue du Marché-aux-Herbes  
L-1728 Luxembourg  
Grand Duché du Luxembourg

info@loft.lu  
www.loft.lu

T. +352 26 54 17 17  
T. +352 26 53 25 36