

# APARTMENT WALFERDANGE

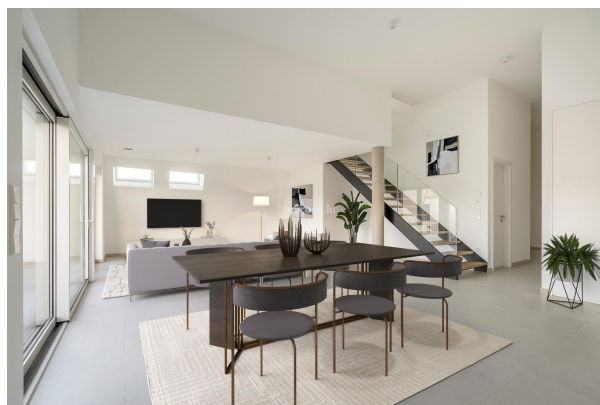
REF. 8684

1 265 000 €

5 bedroom(s)

142.67m² Area

Energetic Index A



Less than 7 km north of Luxembourg City, in the charming commune of Walferdange, prized for its quality of life and authentic character, your Unicorn real estate agency is offering for sale a new duplex in the Vetta residence.

Located on the second floor of the residence, on the garden side, this 157 m2 property has plenty to offer.

As you enter this beautifully finished apartment, you'll find a charming entrance hall giving access to the 52 m2 living space with its high ceilings, as well as to the night hall.

Illuminated by an 18m2 balcony, the living area is entirely open-plan. Living room and dining room open onto the kitchen, ideal for convivial entertaining.

The night hall leads to three bedrooms, one with en-suite bathroom, a shower room and separate toilet.

Two further bedrooms, including the masterbedroom, and a bathroom can be accessed via the stairs on the second floor.

The property also features a cellar, a basement parking space and an outdoor parking space.

For further information, please contact us on 26 54 17 17.

<https://www.loft.lu/en/detail-8684-vente-appartement-walferdange>

**loft**.lu

18, rue du Marché-aux-Herbes  
L-1728 Luxembourg  
Grand Duché du Luxembourg

info@loft.lu  
www.loft.lu

T. +352 26 54 17 17  
T. +352 26 53 25 36